

# At the Heart of Mixing



**MILTON ROY**  
**Mixing**

Because customer satisfaction is a continuous goal, MILTON ROY MIXING applies its rigorous, imaginative approach to significant industrial challenges.

# The power of an International Group

In 2003, the **DOSAPRO MILTON ROY** group launched **MILTON ROY MIXING** at Samoreau, some 80 km South-East of Paris. **ROBIN INDUSTRIES'** 10000 m<sup>2</sup> manufacturing site meets the requirements of all current Quality, Environment, Health and Safety standards.

For the past 40 years, **ROBIN INDUSTRIES** (established in 1895) has been specialized in optimization and development of all aspects of stirring and mixing for industrial applications. The company is now being renamed **MILTON ROY MIXING**.



**MILTON ROY MIXING** Mixers are marketed by the entire **MILTON ROY** sales network.



## Skills for Success

**MILTON ROY MIXING's experienced teams** have the technical, commercial, cultural and linguistic skills needed to guarantee total service and satisfaction.

**Our research and development department** uses modern flow modelling tools (Computational Fluid Dynamics) to continually improve our product lines and ensure that they are interchangeable with existing units. In a continuous drive to facilitate implementation, safety and maintenance, **MILTON ROY MIXING** provides world-wide coverage with teams available at short notice, and conducts laboratory tests and simulation models.

### Manufacturing on the front line:

- Improved manufacturing tools,
- Increased capacity and power of the test platform,
- Compliance with technical specifications, highly competitive lead times and costs,
- Testing your equipment in our laboratory tanks (up to 130 m<sup>3</sup>).

We meet all these objectives by carefully analysing customer requirements and setting up a highly reactive organisation, always listening to customers. Our teams are key partners in enhancing the value of your process.

# MILTON ROY MIXING products Our Customers preferred

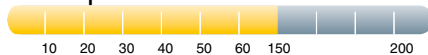
## The HELISEM<sup>®</sup> line

including three standard mixers, is designed for economical mixing solutions, available with short deliveries.

Tank m<sup>3</sup>



Temperature C°



Pressure Bar



### VT mixer:

- Closed tank
- Slow speed: < 100 rpm (with reducer) or high speed: 750 to 1500 rpm
- Guiding turret and seal device
- Sabre<sup>®</sup> streamlined propeller
- Medium tanks, 3 to 100 m<sup>3</sup>
- Max. pressure 7 bar, max. temperature 150°C

### VR mixer:

- Open tank
- Slow speed: < 100 rpm
- Sabre<sup>®</sup> streamlined propeller
- Medium tanks: 3 to 100 m<sup>3</sup>
- Atmospheric pressure and temperature

### VD mixer:

- Open tank
- High speed: 750 to 1500 rpm
- Marine propeller
- Small tanks < 3 m<sup>3</sup>
- Atmospheric pressure and ambient temperature

The HELISEM<sup>®</sup> line has a broad range of applications, including water treatment, fine chemicals and end-products industries.

Options available on the HELISEM<sup>®</sup> line include:

- Carbon steel, stainless steel or coated stainless steel finish,
- Mechanical or electronic speed variators,
- Special paints,
- Performance test,
- Other requirements on request.

The ATEX directive can be applied to all the HELISEM<sup>®</sup> Mixers.

Products include two lines:


# Robins' supplier ...

## The **Robins**<sup>®</sup> line

Our range of customized mixers is ideal for complex processes running in extreme conditions, best suited to the requirements of hydrometallurgy, the chemical and petrochemical industry, and fine chemicals.

The list of possible applications includes alumina refining, fermentation, polymerization, phosphoric acid, resins and high viscosity products, to name but a few.

- Pressure up to 250 bar, 350 °C
- Volumes from 0.010 m<sup>3</sup> to 10 000 m<sup>3</sup>.

Each  **Robins** mixer is defined jointly with the customer. There are no design limits to the range of mixing tools, which can include HPM patented propellers, turbines, anchors, ribbons, and twin movement.

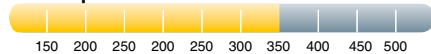
Any number of mixing systems can be placed at different locations within the tank (side, top or bottom inlet).

Other specific units are covered by patents, often developed jointly with major chemical and water treatment companies.

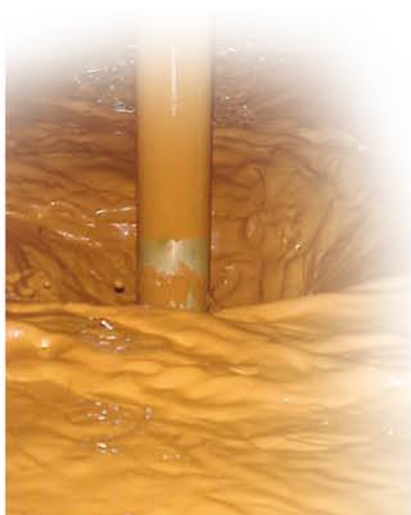
Tank m<sup>3</sup>



Temperature C°



Pressure Bar





# Our commitment to Quality and the Environment

**ROBIN INDUSTRIES** first obtained ISO 9001 certification in 1994, and in 2003 was re-certified against the ISO 9001:2000 standard. Our continuous progress strategy upholds the following commitments :

- Satisfy our customers, the main driver behind all our activities.
- Improve our industrial and commercial techniques to ensure that our products are best suited to customers' requirements.
- Ensure that every order is representative of **MILTON ROY MIXING's** quality and know-how.
- Ensure that each and every member of staff takes Quality into account and is committed to achieving top quality in their individual work and for the Company as a whole.



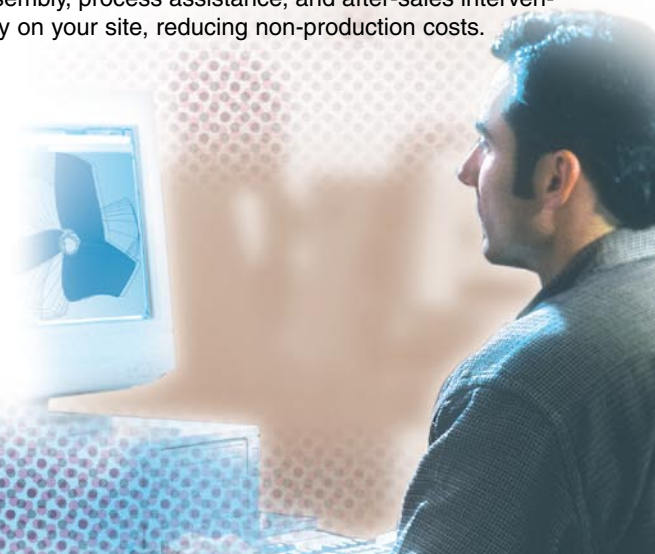
## Always available and attentive to ensure Customer satisfaction:

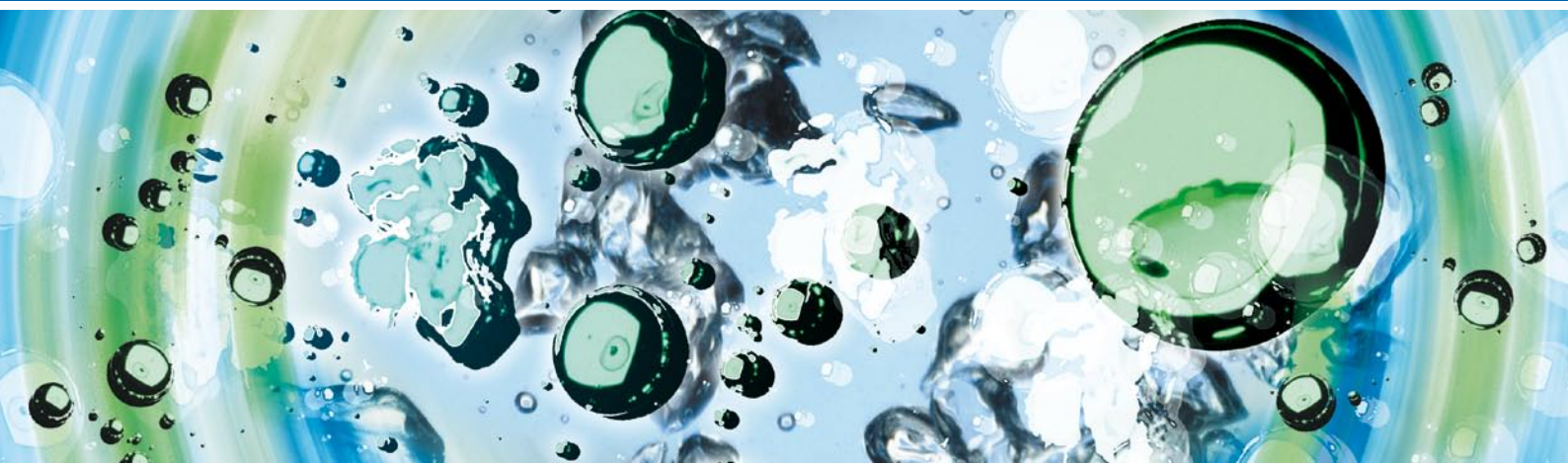
**Our commitment and our understanding of your speciality**, supported by our international salesforce, ensure that we meet your expectations.

**Our customers benefit from our skills** and expertise in mixing.

**Our computer-based tools help provide an optimal solution**, meeting your requirements anywhere around the globe.

**Our after-sales service and spare parts department** includes on-site assembly, process assistance, and after-sales intervention directly on your site, reducing non-production costs.





## Contact us:

**MILTON ROY EUROPE**  
10, Grande Rue  
27360 PONT SAINT PIERRE  
FRANCE  
Tel : +33 (0) 2.32.68.30.00  
Fax : +33 (0) 2.32.68.30.93  
[www.miltonroy-europe.com](http://www.miltonroy-europe.com)

**MILTON ROY MIXING**  
10, rue du bois Gasseau  
77210 SAMOREAU  
FRANCE  
Tel : +33 (0) 1.60.74.95.20  
Fax : +33 (0) 1.60.74.95.29  
[www.miltonroymixing.com](http://www.miltonroymixing.com)

Your partner

<http://www.pallrocescorp.com>



**MILTON ROY**  
**Mixing**